

Enhance your technical assistance skills!

# REGENERATIVE GRAZING: THE BASICS & BEYOND

A FREE ONLINE INTERACTIVE EDUCATION SERIES FOR CENTRAL ILLINOIS  
AGRICULTURAL EDUCATORS AND TECHNICAL ASSISTANCE PROVIDERS

Apply by **October 1, 2020** (find more information and apply [here](#))  
Decisions announced **October 15, 2020**

As consumers have become more concerned with the environmental impact of their food choices, many are looking to source their meat locally from producers whose practices support our environment. Fortunately, producers want to meet increased local demand using good grazing practices. What's missing? Agricultural technical assistance providers who are knowledgeable about grazing and livestock management. These professionals are needed to support producers and landowners making decisions about managing livestock grazing on their land. To address this gap in available technical assistance, the Pasture Project, University of Illinois Extension, The Land Connection, and the Champaign County Soil & Water Conservation District have developed an online educational series to provide *you* with a broad understanding of the ins and outs of regenerative grazing and how you can help producers integrate regenerative grazing into their operations. This support will help meet consumer demand for local meat while improving environmental outcomes in our state.



*Space is limited!* This program is designed to create a cohort of motivated individuals exploring regenerative grazing together. To encourage rich discussion and provide space for participants to create deep, lasting connections in their professional networks, capacity is limited to 15 participants.



**I ILLINOIS**  
Extension  
COLLEGE OF AGRICULTURAL, CONSUMER  
& ENVIRONMENTAL SCIENCES



**Pasture Project**  
AT THE WALLACE CENTER



Scan the QR code above or click [here](#) to access the application.

## Who is this training for?

Applications are open to all Illinois-based agricultural service providers intending to support producers integrating regenerative grazing into their operations. Priority will be given to early-career agricultural support professionals and those providing services within the Embarras watershed.

- University Extension agents
- Government agency natural resources and agricultural staff
- Nonprofit agricultural educators and technical service providers
- Consultants or private business employees serving agricultural producers

This *free* series will be offered entirely online using the Zoom platform for presentation and discussion sessions. Participants are expected to attend all six sessions (see full schedule below) and complete additional readings and tasks between meetings (a commitment of approximately 10 hours from November 2020-January 2021). Participants are strongly encouraged to attend an additional three online sessions designed for farmers (February-March 2021) to get a first-hand understanding of the questions and concerns of producers as well as an in-person regenerative grazing field day in spring 2021.

Visit [www.thelandconnection.org/event/regen-grazing](http://www.thelandconnection.org/event/regen-grazing) for more information and to access the application. **Apply by October 1, 2020.**

All sessions will be led by **Kent Solberg**, *Livestock and Grazing Specialist* with the Sustainable Farming Association of Minnesota. Illinois graziers will also be present to provide context for each session.

**THURSDAY,  
DECEMBER 3, 2020**  
*90 Minutes - Zoom*

### **The WHY: *What is Regenerative Grazing?***

- Practice: what is it and how does it differ from continuous grazing
- Exploring multiple benefits: environment, soil health, profitability, and producer goals

**THURSDAY,  
DECEMBER 10, 2020**  
*60 Minutes - Zoom*

### **Ask Me Anything! The WHY.**

**TUESDAY,  
DECEMBER 15, 2020**  
*90 Minutes - Zoom*

### **The HOW: *The Nuts and Bolts of Regenerative Grazing on the Farm***

- The tools: paddocks, fencing, and water
- Forage basics: diversity and nutrition
- Grazing cover crops

**THURSDAY,  
DECEMBER 17, 2020**  
*60 Minutes - Zoom*

### **Ask Me Anything! The HOW.**

**THURSDAY,  
JANUARY 7, 2021**  
*90 Minutes - Zoom*

### **Putting It Into Practice: *Building a Regenerative Grazing Program for Farmers***

- Addressing common questions from producers
- How to respond to, "it won't work here, because..."
- Tips for supporting producers

**THURSDAY,  
JANUARY 14, 2021**  
*90 Minutes - Zoom*

### **Ask Me Anything! Putting It Into Practice.**

**SPRING 2021 TBA**  
*Optional - \$15*

### **Regenerative Grazing Field Day**

## Why regenerative grazing?

Regenerative grazing can enhance soil health and reduce nutrient loss while supporting farm profitability and food system resilience. This differs from common continuous grazing practices by regularly moving livestock to create a more even distribution of manure throughout the pasture, providing fertility to the land, and allowing it time to rest and *regenerate*. This type of grazing is well-suited for Illinois because it can:

- provide an additional revenue stream to farmers and landowners;
- provide opportunities to grain farmers to integrate livestock into their rotations by grazing fallow fields and cover crops;
- improve soil health and water quality;
- and help Illinois meet its nutrient loss reduction goals.

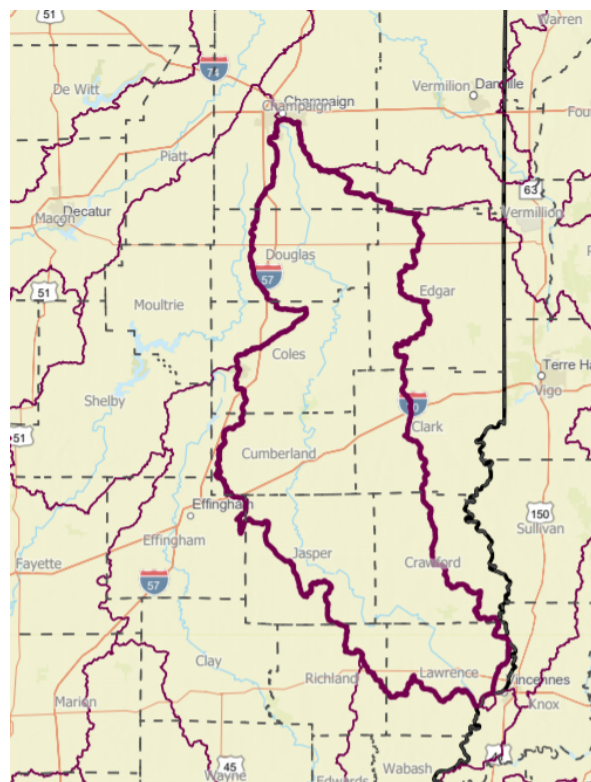
## What will I gain?

- Enhanced understanding of the benefits of regenerative grazing practices
- Skills and knowledge to support implementation of regenerative grazing practices on the ground
- Broadened network of local professionals and national experts to turn to for advice and information



## Embarras River Watershed

The Pasture Project at The Wallace Center has identified the Embarras River Watershed as a priority area for increasing regenerative grazing in Illinois (learn about their assessment [here](#)). The watershed has further been identified as a priority area in the Illinois Nutrient Loss Reduction Strategy for reducing phosphorus loads (learn more about the implementation strategy [here](#)).



- County boundary
- █ Embarras watershed
- HUC 12 boundary
- ▭ State boundary